

TRACS Oct 26-27 2024 USDAA, Woodland CA

Check-in Schedule (check in only on your first day)

Check in/measure-in:	8:15 - 8:45AM
First walk through:	8:45AM
First dog on the line:	9:00AM

You must measure in if you don't have a height certification listed for you in your competitor services dashboard on the USDAA website.

Thank you for entering our Fall USDAA Agility trial! This is a modest sized USDAA trial, we hope to be done by mid afternoon in plenty of time for happy hour. Please check the trial information that will be posted to the website, and your emailed entry confirmation; We *love* finding mistakes before the weekend. If you have anything to change, mail Karey Krauter at kek@bumpsays.com or call 650-906-5146.

Important Note to exhibitors: We must clean-up and bag all poop (it is in the contract - we will be fined if this is not done). Also do not allow dogs to urinate on trash cans or ANY structure!!!

AGILITY GATE: Yes! The access code is the trial date 1026.

FOOD: There will be no food available for purchase or otherwise on-site. Please bring your own! Including workers!

WORKERS: Whiteboards will be ringside at each ring where everyone else can sign up on day-of, for which we will be deeply in your debt. Every class you work in will earn you tickets for our awesome Workers Drawing. If your Crew Chief doesn't give you one, don't be shy—ask for it!

SCORING, QUESTIONS, POSTING - Please check your results as soon as possible so we may resolve any questions you may have before the judge forgets what your run was like! If you want to check your score while your jump height is still running, feel free to peek over our shoulders. While it's true the score table is busy, we are never too busy to help you.

GATE HOURS: 7AM-9PM

Note that the gate into the interior of the fairgrounds will be open ONLY during these hours. For RV access after 9PM, please refer to special access info in your checkin packet. **More better would be if you took care to enter before 9pm!**

BITCHES IN SEASON

Are allowed at this event, provided they wear sanitary britches the entire time they are in populated areas (pottying, around the rings, in the rings while running).

DIRECTIONS:

East on Interstate 80: Interstate 80 East to Woodland off ramp (Hwy.113). Take Gibson Rd. turn off. Turn left onto Gibson Rd. At Matmor signal turn right. Go to Gum Ave. (stop sign). Turn left onto Gum Avenue and, proceed west to main entrance of fair.

South on Interstate 5: Interstate 5 take Hwy. 113 (Main Street). Stay on 113 and take Gibson Road turn off. Turn right at Matmor signal and go to Gum Ave. Turn left onto Gum and proceed west to the main entrance.

North on Interstate 5: Take Interstate 5 North and take the E. Main Hwy 113 off ramp, turn left and follow E. Main street thru town. Turn left on East Street. Go to Gum Ave. and turn left. Go through the front entrance of the fairgrounds.

Friday SETUP TIMELINE

11:30AM - Setup workers may arrive. RV's may arrive

12:30PM - Ring set-up starts. Competitors are very welcome to come then and help set up AND get preferential crating.

3PM - General competitor set up. If you show up before 3PM and are NOT helping with set-up at that time, then you will be invited to please wait until 3PM.

500PM - PRACTICE RUNS! \$10/run, \$25/three runs, each run is 60secs of whatever you need in the ring, except no food. **Retired agility dogs running with bars on the ground are FREE.**

All proceeds from these fun runs will be earmarked for the club to use to buy an AED to bring to TRACS events!

Be aware that the fairground gates will be LOCKED after 9PM each day, and the competitor assumes all risk of leaving items overnight. TRACS will not be responsible for any loss or damage to items at the show site. See below GATE HOURS section on what to do after 9PM.

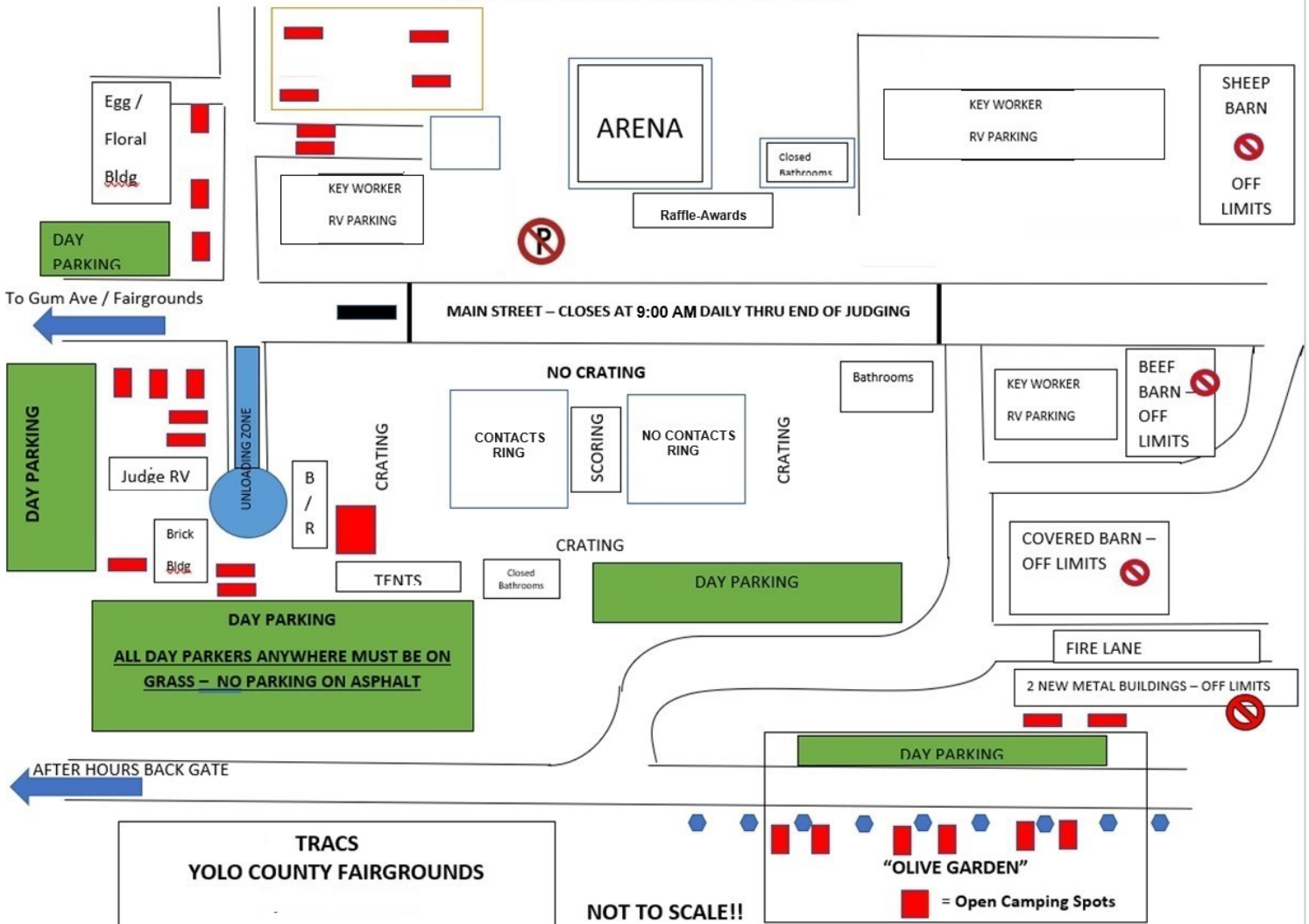
DAY PARKING - Parking is allowed anywhere in green on the map below. No parking allowed in any buildings, and (unlike anywhere else!) please park ALL THE WAY ON THE GRASS, no wheels on asphalt. If you anticipate needing to move your vehicle when dogs are running in the rings, please use the road around the back to get out, and not the main street road that goes right next to the rings,

RV PARKING - Is by advance arrangement only, contact kek@bumpsays.com.

When you arrive, check in with Sandy Zajkowski for the permit you are required to display on your dashboard, along with special after-hours access info. RV spots are first-come-first-served, with the exception of some marked spots that will be reserved for key workers. If you want to RV with your friends, make your own arrangements to have the first arrived in your group save adjacent spots for the rest of your crowd.

SATURDAY		SUNDAY	
SCOTT LOVELIS	SCOTT LOVELIS	SCOTT LOVELIS	SCOTT LOVELIS
CONTACTS	NO CONTACTS	CONTACTS	NO CONTACTS
tall-small	tall-small	small-tall	small-tall
	STP		Pairs
Mas Gam		Mas Gam	
	Adv-St Jmp		St-Adv Snk
Adv-St Gam		St-Adv Gam	
	Mas Jmp		Mas Snk
BIATH Std		GP	
	BIATH Jmp		St-Adv Jmp
Mas Std		Mas Std	
		Adv-St Std	
Adv-St Std			Mas Jmp

DAY PARKING & RV LAYOUT



RV parking spots marked with an irrigation pin flag are RESERVED and not available for first-come-first-serve RV parking.